



FARM RESOURCE MANAGEMENT

Cut costs, boost efficiency and drive sustainability

Technology

This technology enables real-time monitoring of farm resource consumption using LoRaWAN wireless pulse counters. These sensors track electricity and water usage, feeding live data into a dashboard that helps farmers analyse trends, identify inefficiencies and optimise resource management.

The Need for Farmers

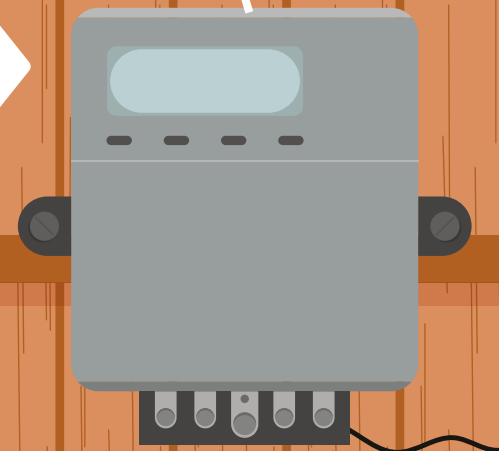
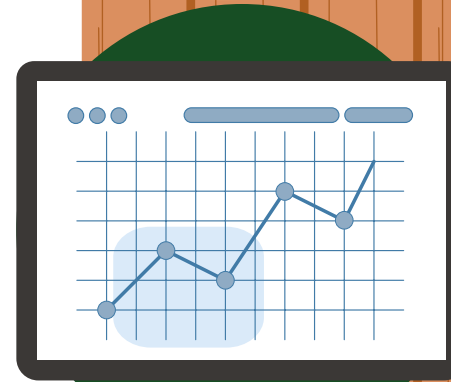
- › Monitoring resource use improves efficiency and reduces costs
- › Continuous tracking helps manage high and low usage periods
- › Better data enables smarter decision-making for sustainability

Benefits



Why Rural Connectivity Matters?

Farm-wide sensors deliver real-time insights, ensuring farmers can capture, analyse and act on data instantly - driving efficiency and sustainability.



HARTPURY
AGRICULTURE

DIGITAL INNOVATION FARM